

# LORUS QUARTZ

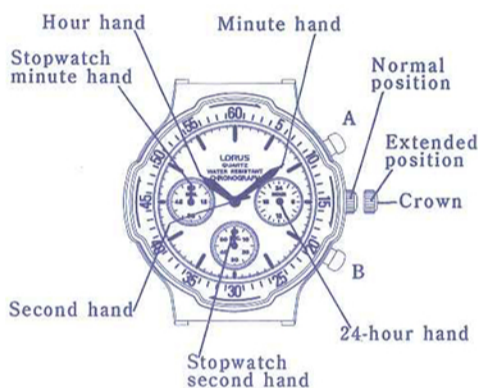
## Instruction Manual

### MEN'S ANALOGUE CHRONOGRAPH RWY Series (Cal. V654)

#### ■ CHARACTERISTICS

1. Time: Indicated by the hour, minute, second and 24-hour hands.
2. Stopwatch: Measures up to 60 minutes with one-second readout. Split time measurement is also possible.

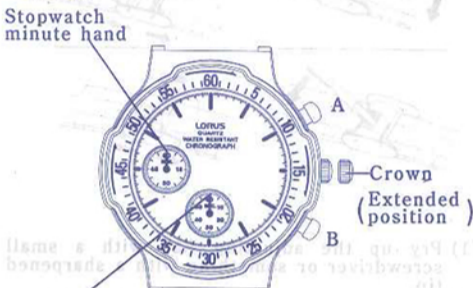
#### ■ DISPLAY AND CROWN & BUTTON OPERATION



- Crown**  
 Normal position : Free  
 Extended position :  
 • Setting the hour, minute and 24-hour hands.  
 • Activating the stopwatch hand position adjusting function.
- Button A :**  
 • Start / Stop in the stopwatch function.  
 • Turning of the stopwatch minute and second hands counterclockwise in the stopwatch hand position adjusting function.
- Button B :**  
 • Split / Split release / Reset in the stopwatch function.  
 • Turning of the stopwatch minute and second hands clockwise in the stopwatch hand position adjusting function.

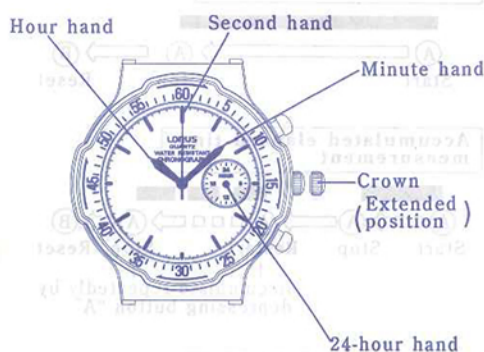
#### ■ ADJUSTING THE STOPWATCH HAND POSITION

- Before setting the time, be sure to check if the stopwatch minute and second hands are in the "0" position.
- \* If the stopwatch is in use, depress the buttons in the following order to reset it, and then check if the hands return to "0" position. (See "HOW TO USE THE STOPWATCH".)
- If the stopwatch is counting: "A" → "B"
  - If the stopwatch is stopped: "B"
  - If the split time is displayed: "B" → "A" → "B"
- \* If either of the stopwatch hands are not in the "0" position, reset them following the procedure below.



- Stopwatch minute hand**
1. Pull out the crown.
  2. Depress button "A" and "B" repeatedly but separately to reset the stopwatch minute and second hands to "0" position.  
 \* The stopwatch minute hand moves correspondingly with the stopwatch second hand.  
 \* By depressing buttons "A" and "B", the hands move counterclockwise and clockwise, respectively.  
 \* The hands move quickly if the respective buttons are kept depressed.
  3. Push the crown back in to the normal position.

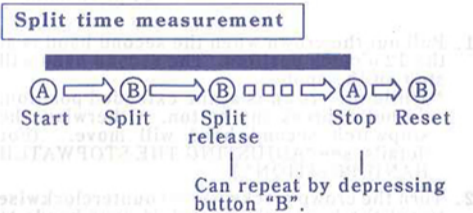
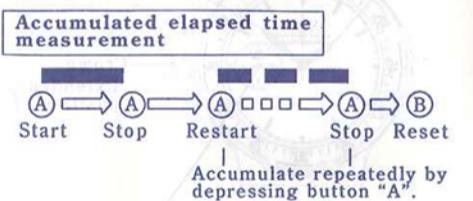
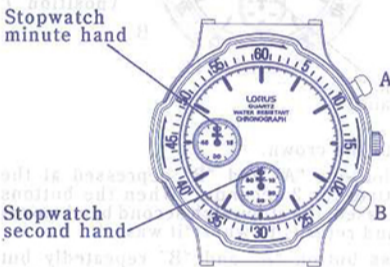
#### ■ HOW TO SET THE TIME



1. Pull out the crown when the second hand is at the 12 o'clock position. The second hand will stop on the spot.  
 \* While the crown is at the extended position, do not depress any button. Otherwise, the stopwatch second hand will move. (For details, see "ADJUSTING THE STOPWATCH HAND POSITION".)
2. Turn the crown clockwise or counterclockwise to set the hour, minute and 24-hour hands to the desired time.  
 \* As the hour hand moves, the 24-hour hand also moves correspondingly.  
 \* When setting the hour hand, be sure to check that the 24-hour hand is set properly.  
 \* When setting the minute hand, first advance it 4 to 5 minutes ahead of the desired time and then turn it back to the exact minute.
3. Push the crown back in to the normal position in accordance with a time signal.

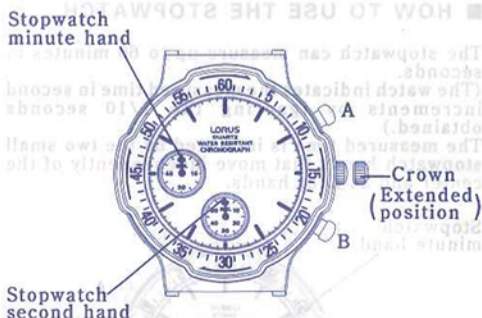
#### ■ HOW TO USE THE STOPWATCH

The stopwatch can measure up to 60 minutes in seconds. (The watch indicates the measured time in second increments by ignoring the 1/10 seconds obtained.) The measured time is indicated by the two small stopwatch hands that move independently of the center and 24-hour hands.



#### ■ NECESSARY PROCEDURE AFTER BATTERY CHANGE

When the battery is replaced with a new one, the time information stored in the built-in IC and the time indicated by the stopwatch hands do not correspond with each other. Before using the watch, therefore, be sure to reset the stopwatch hands to "0" position following the procedure below. If the stopwatch hands should move improperly, also follow the same procedure.



1. Pull out the crown.
2. Keep buttons "A" and "B" depressed at the same time for 2 seconds. When the buttons are released, the stopwatch second hand moves back and returns to where it was.
3. Depress button "A" and "B" repeatedly but separately to reset the stopwatch minute and second hands to "0" position.

4. Turn the crown to set hour, minute and 24-hour hands to the desired time, and push the crown back into the normal position. (Refer to "HOW TO SET THE TIME".)

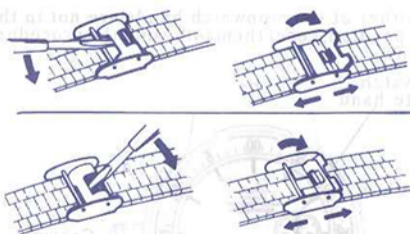
#### ■ BATTERY CHANGE

The miniature battery SEIKO SR920SW, Maxell SR920SW, SONY SR920SW, Matsushita SR920SW or EVEREADY 371, which powers your watch should last approximately 2 years. However, because the battery is inserted at the factory, the actual life of the battery once in your possession may be less than 2 years. Be sure to replace the battery to prevent any possible malfunction as soon as it runs down. To replace the battery, we recommend taking the watch to a local watch repair shop.

**Note:** If the stopwatch is used for more than 60 minutes a day, the battery life may be less than the specified period.

#### ■ HOW TO ADJUST BAND LENGTH

- Sliding clasp band



- (1) Pry up the adjusting flap with a small screwdriver or something with a sharpened tip.
- (2) Slide the clasp to adjust it to a desired size.
- (3) Close the adjusting flap.

#### ■ CARE OF YOUR LORUS WATCH

- **WATER RESISTANT**  
 Your watch is classified into one of the following four groups by the degree of water resistance. Please read the appropriate item below for proper use.  
 If your watch is water resistant, "WATER RESISTANT" is shown on the back of your watch case. If your watch is 100m or 50m water resistant, it is so indicated on the dial. If your watch is non-water resistant, there is no such indication.

**Water resistant:** These watches are designed to withstand accidental contact with water, for example, splashes or rain, but should not be worn while swimming or diving.

**Water resistant (50m):** These watches are suitable for swimming and can be worn in the shower, but not for diving.

**Water resistant (100m):** These watches are suitable for swimming or skin diving (without heavy breathing apparatus), but not for scuba diving.

**Non-water resistant:** Care should be taken not to get your watch wet as water may damage the movement.

- Do not depress any buttons or turn the crown when the watch is wet.

- If the watch is exposed to salt water, rinse it in fresh water and then wipe it thoroughly dry.

• **ANTI-MAGNETIC**  
 Your watch will not be affected by magnetism generated by household electric appliances.

• **ANTI-SHOCK**  
 Your watch may be worn for normal sports activities, but be careful not to drop it or hit it on hard surfaces.

• **TEMPERATURE**  
 Your watch is preadjusted so that constant accuracy may be insured at normal temperature.