

LORUS

INSTRUCTION MANUAL on attaching/removing the watch band

The watch band is easy to change.
Follow the instructions below to remove or attach the
band to the watch. Use the enclosed tool for this
purpose.



Warning

Keep the small parts (push-pins etc.) away
from children. If a child swallows any of them,
consult the doctor immediately.

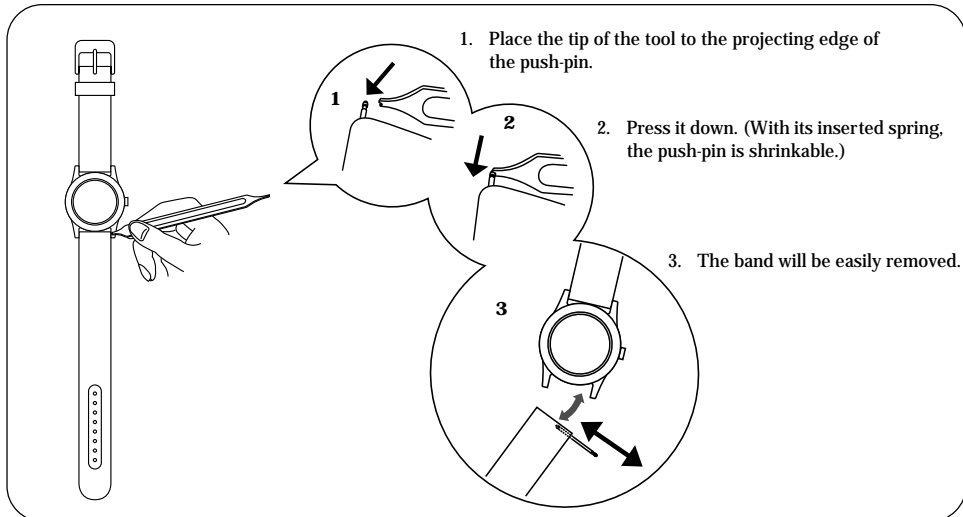
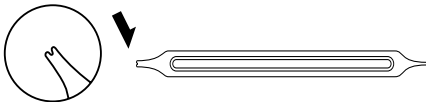


Caution

Be careful of your fingers when handling the
tool.

■ How to remove the separate type band

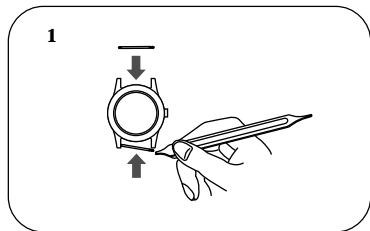
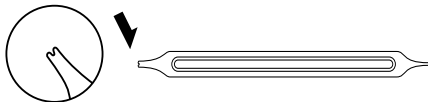
❖ Use the two-forked end of the tool to attach and remove the push-pin.



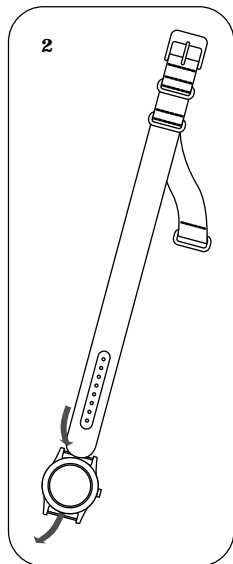
❖ The reverse procedures will be applied in order to attach the separate type band.

■ How to attach the one-piece band

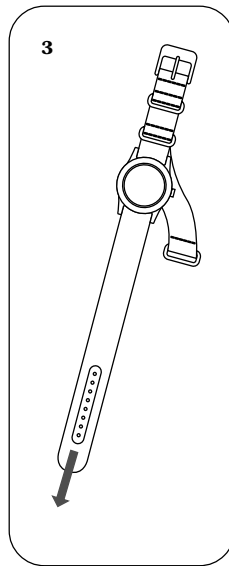
- ❖ Use the two-forked end of the tool to attach and remove the push-pin.



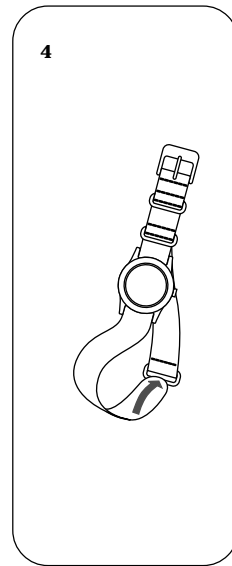
1. Set the push-pin into the watch head by using the tool.
- ❖ To attach the push-pin to the watch head, refer overleaf ■ How to remove the separate type band.



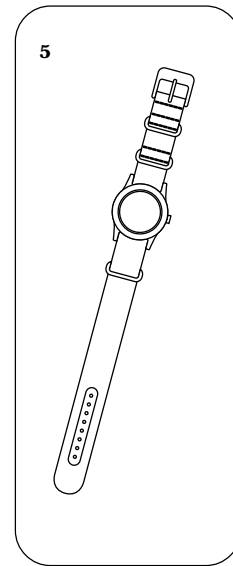
2. Pass the band underneath the watch head.



3. Pull down the band.



4. Pass the band through the ring.



5. Pull the band down once again to fasten.

- ❖ The reverse procedures will be applied in order to remove the one-piece band.